

THE QUAY

LIVERPOOL
WATERS

EXISTING AMENITIES



RESIDENTIAL



BUSINESS SPACE



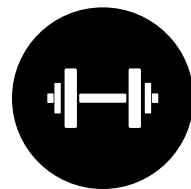
HOTEL &
CONFERENCE FACILITIES



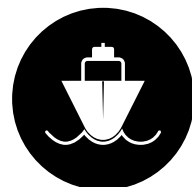
NURSERY



CONVENIENCE
STORE



LEISURE & GYM



CRUISE LINER
TERMINAL



PUBLIC SPACE



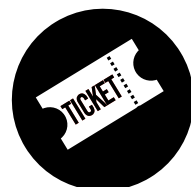
PARKING



COFFEE SHOPS



BARS &
RESTAURANTS



EVENT SPACE

A ROOM WITH A VIEW

LIVERPOOL WATERS

Princes Dock is the first phase of Liverpool Waters and is located adjacent to the iconic Royal Liver Building.

With panoramic views of the River Mersey, Princes Dock is a world-class business destination and leisure complex, located in the heart of the city. Already an established office location, this neighbourhood also provides multi-storey car parking facilities, three residential buildings, an array of on-site amenities and leisure facilities which includes the Malmaison and Crowne Plaza hotels and Liverpool International Cruise Liner Terminal.

Nearby sporting, retail and cultural attractions such as the famous Tate Gallery, Beatles Museum, Liverpool One and Anfield Stadium and Goodison Park mean there's plenty to see and do – what more could you ask for?





A ROOM WITH A VIEW

FLEXIBLE OFFICE SPACE WITH A DIFFERENCE

The Quay is based on the ground floor of No.12 Princes Dock and offers a range of flexible office suites from 111 sq ft to 1,714 sq ft. All the suites offer stunning floor to ceiling glazing providing impressive waterside views across Princes Dock.

The many benefits of being located at The Quay include:

- Short-term flexible contracts
- All inclusive monthly charge (includes rental, service charge, insurance and business rates)
- Furnished suites
- IT / Telephone
- Air-conditioning
- Shared kitchen
- Meeting room facility
- A free parking space with each office

Occupiers can also use the unique full height glazed internal atrium which is located at the entrance to The Quay in No.12. The atrium provides an ideal break-out facility, informal meeting space or event venue for the occupiers.

The Quay's meeting room facilities offer a bespoke, high-specification facility, available to hire by occupiers or external organisations. Meeting room one comfortably fits 12 people around its boardroom table and has a smart board facility, telephone conferencing and built-in refreshment amenities. Meeting room two fits 6 people and has a white board facility, wi-fi and refreshments.



For more information please email:
imarco@peellandp.co.uk



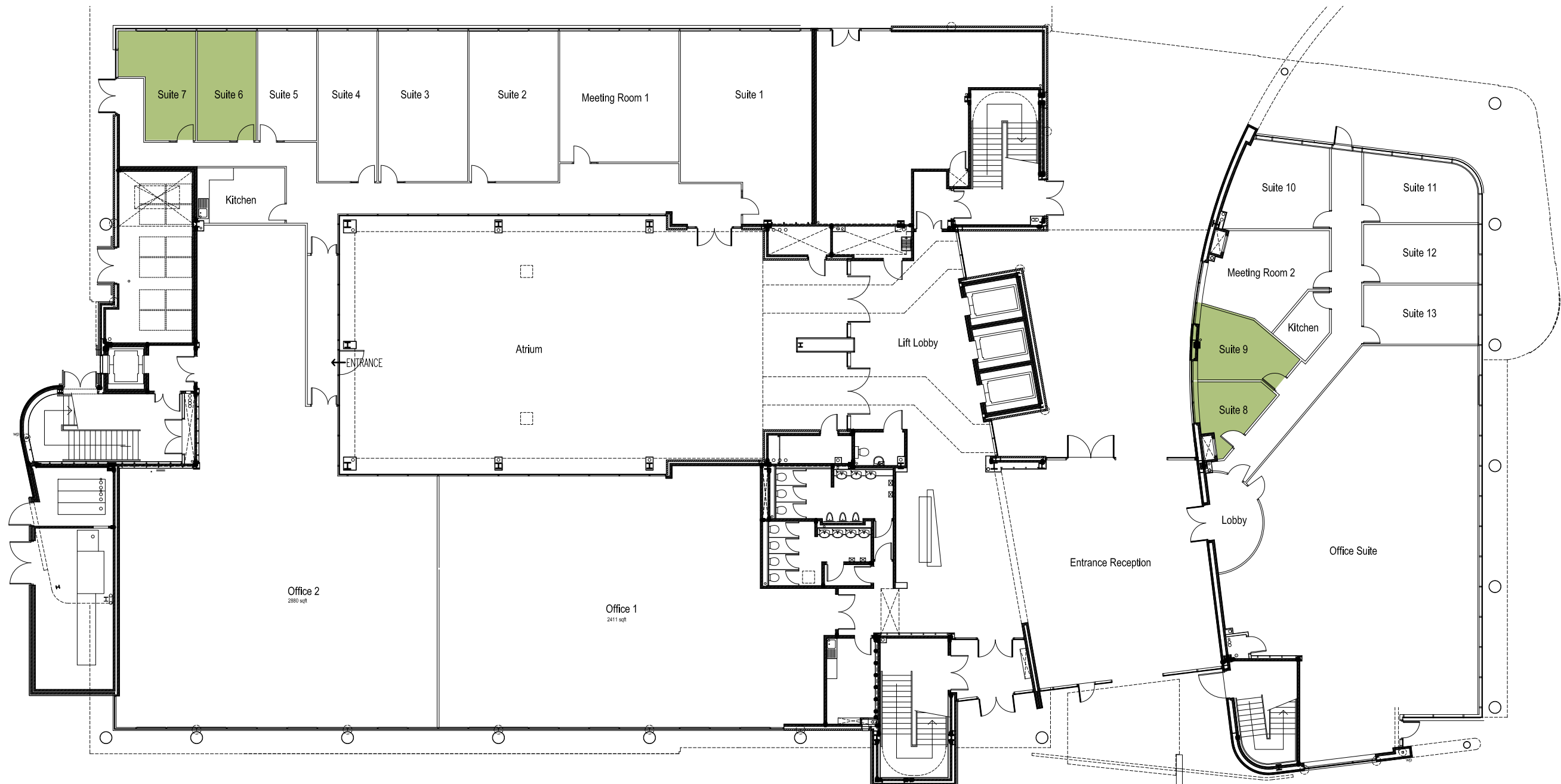
AVAILABILITY

SQ FT

Suites 6&7 - 351 sq ft

Suite 8 - 111 sq ft

Suite 9 - 162 sq ft







THE QUAY, NO12 PRINCES DOCK,
LIVERPOOL WATERS L3 1DL

0151 958 0053
Imarco@peellandp.co.uk
Liverpoolwaters.co.uk

Further information is available from:



ian.steele@avisonyoung.com
remi.smith@avisonyoung.com



mark@worthingtonowen.com
andrew@worthingtonowen.com

